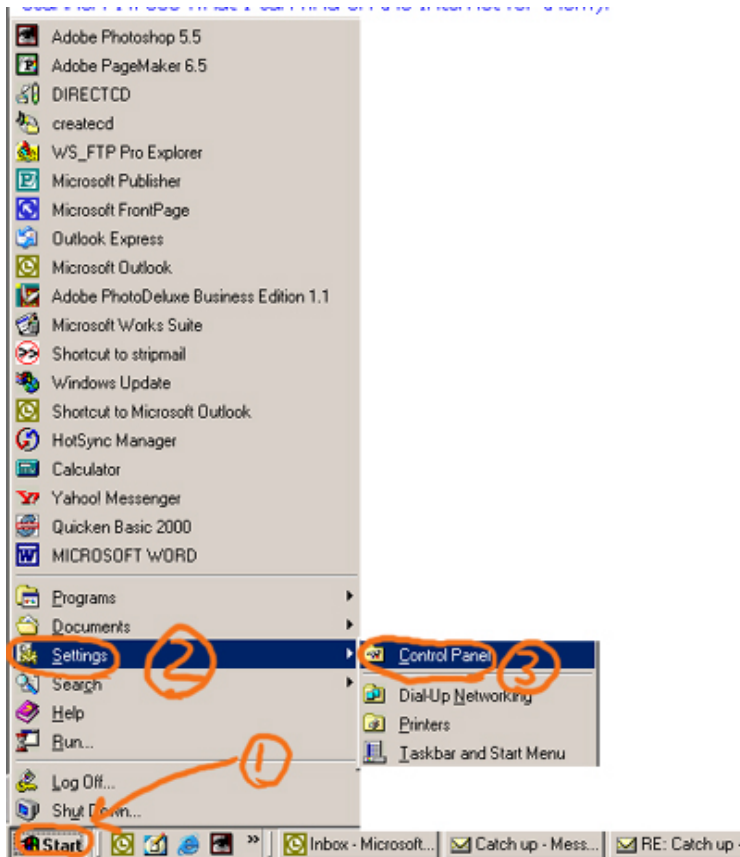


I believe you have two USB ports in the back of the computer. There are adapters available at Staples, and other stores, that allow you to adapt a parallel device to plug into a USB port. That might resolve the issue with wizard.

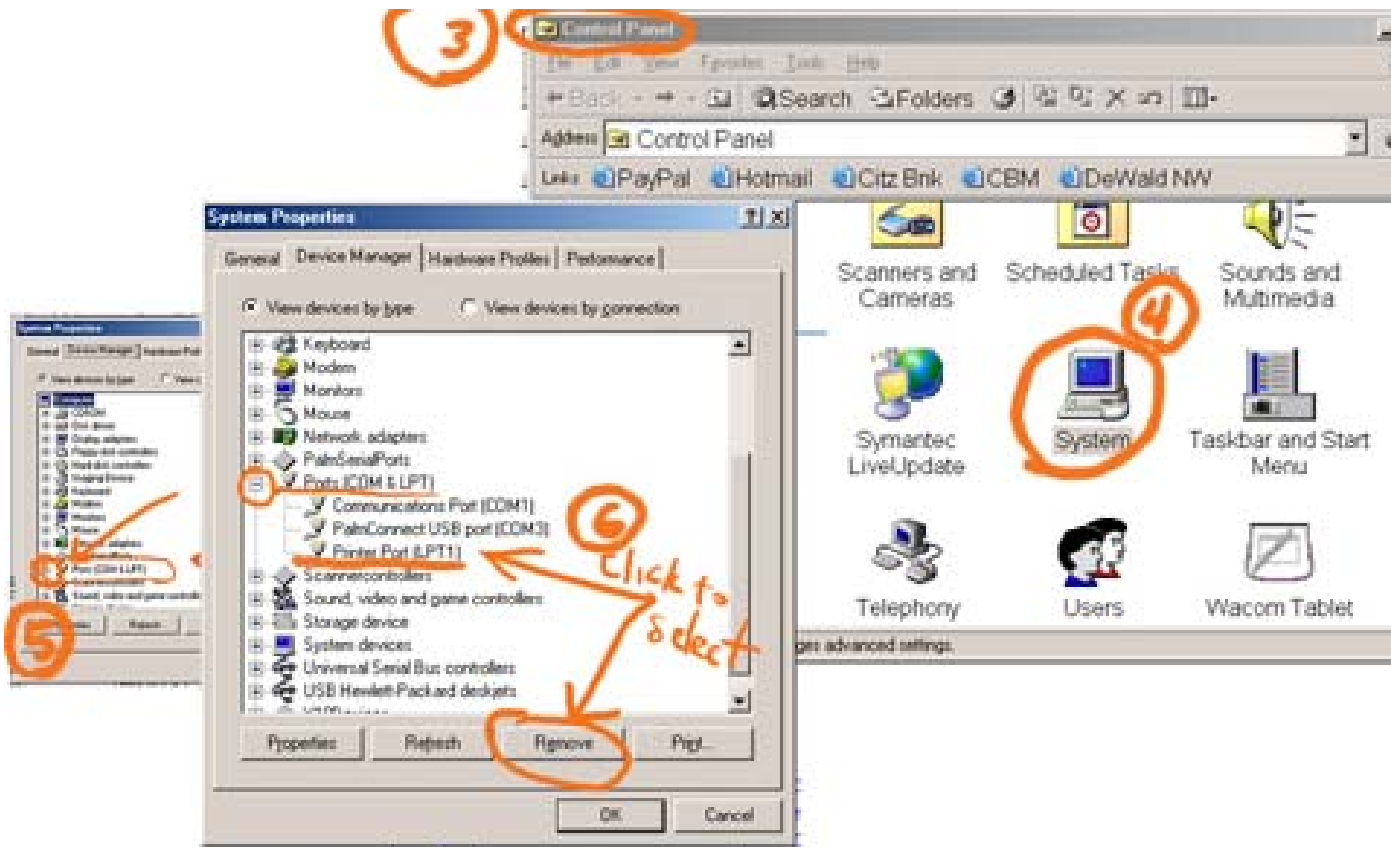
(steps 1-6) Another possible solution is to go into the system folder (in the control panel) and remove the parallel port (LPT) listing.

### Start/Settings/Control Panel (1-2-3)



There is nothing to be concerned about, because you have drivers installed on the system and you also have a CD with the driver. In the worst scenario, we might need to download NEW drivers off the internet. (Let me know what make and model you have for printer and scanner. I'll see what I can find on the Internet for them).

Click on the (+) next to "Ports". (step 5). Then select the Printer Port and click the "remove" button. If there are two LPTs, remove them both.



Then when you restart the machine, it should correct the problem. I would try the later first

Does the wizard come up every time that you start the machine?

Has anything changed since I was there?

How do you get passed the wizard. Is everything still working, once you get passed the wizard?

We will get this resolved for you. If this procedure does not help, or if you don't feel comfortable doing it, let me know. I'll help you with it.