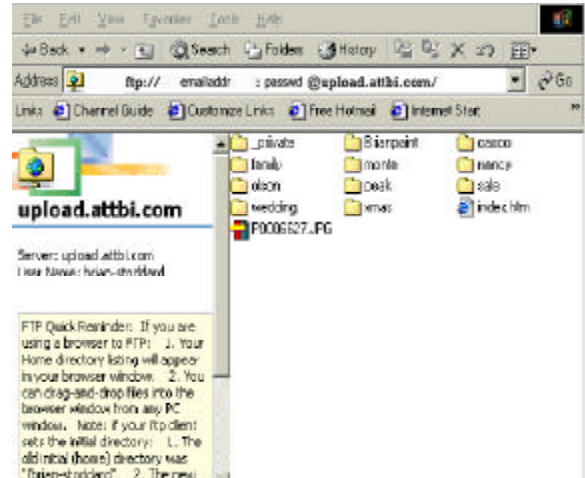
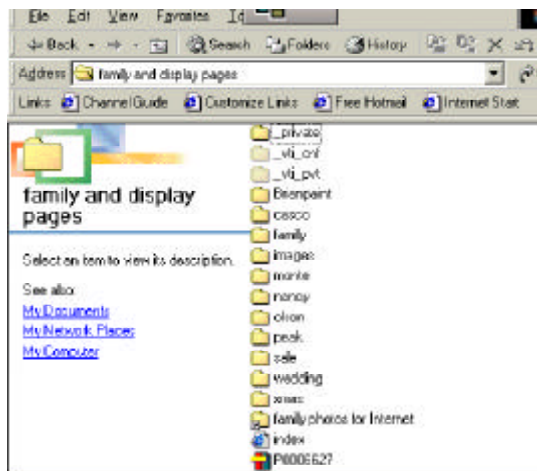


# HOW TO FTP FILES TO Your WEBSITE



The folder on my harddrive is **C:\webshare\family display and pages**

the upload folder                    **ftp://    emailaddr    : passwd @upload.attbi.com/**

All you have to do is edit the pages in **Front Page 2000**, save it to the Webshare location, and drag the updated files from "**family and display pages**" directory in Webshare to the **ftp** in the **Internet Explorer Window**.

-----  
In the example above, "emailaddr" is the first part of your email address (before the @ symbol), "passwd" is your password, and "attbi.com" indicates the ISP provider. (EX: ftp://brihenry:george@upload.casco.net).