

*PC hardware changes:*

**GIVE YOURSELF SOME INSURANCE WHEN MAKING SYSTEM OR HARDWARE CHANGES:**

When you are about to make changes, make copies of the following "hidden" files in the C:\WINDOWS directory

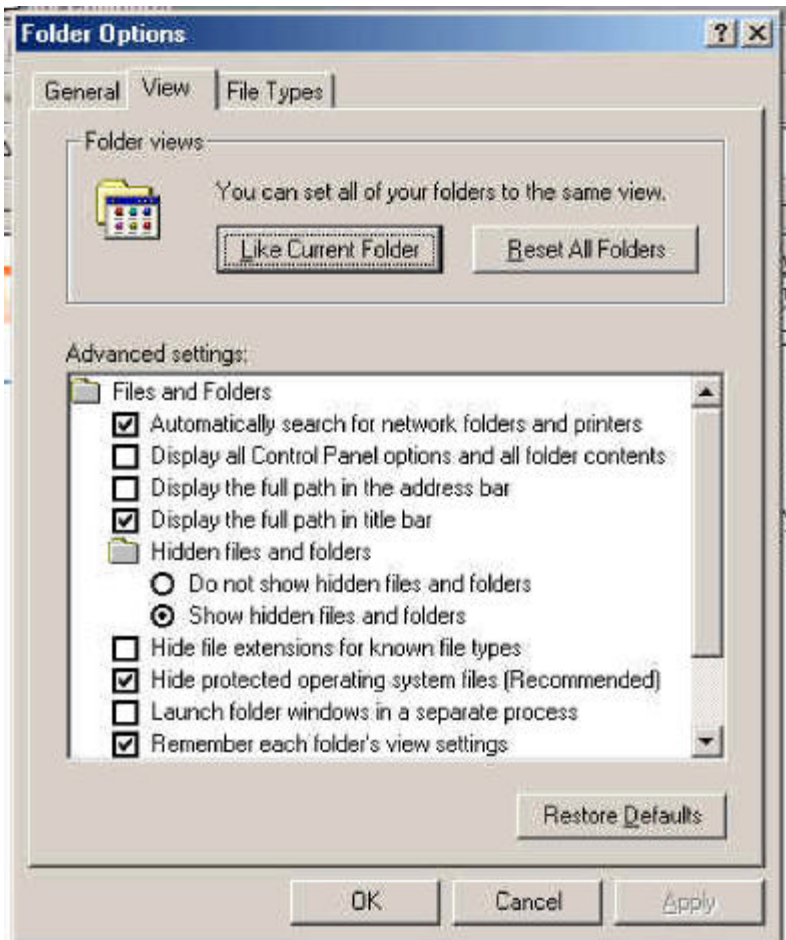
system.dat, user.dat, system.ini, win.ini

**HOW TO SHOW THE HIDDEN FILES:**

Since they are "hidden" files, you can make the "unhidden" first, by doing the following:

my computer (or any window)/tools/folder options/view

Under "hidden files and folders", click on "show hidden files and folders"

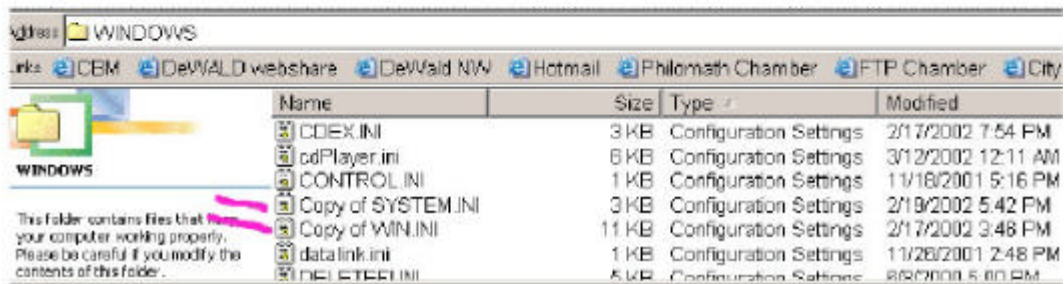
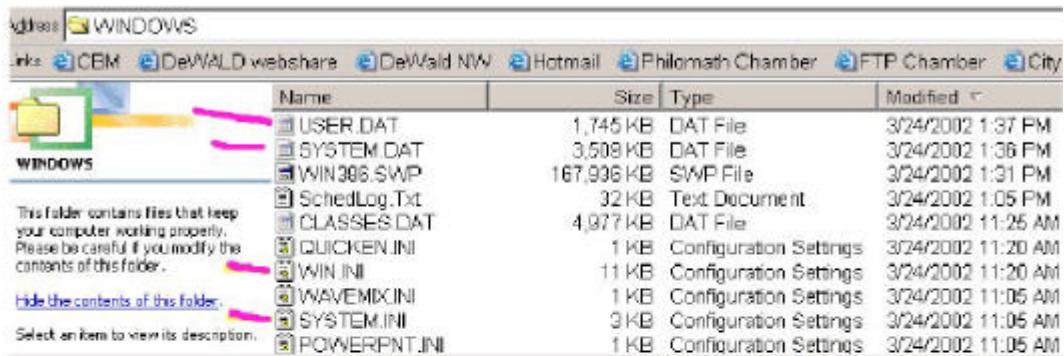


## MAKE COPIES OF DAT AND INI FILES:

you can right click on each one and move a little to the side and the options will come up offering to save a copy of the file into the same directory. It will automatically save as a "copy of..." filename

example:

copy of system.dat, copy of user.dat, copy of system.ini, copy of win.ini



This way, if things go wrong with the new installation, you can simply rename the "copy..." items to the original name and go back to where you started from.

keywords and phrases: system insurance, restore previous system, avoid problems, system changes