

System32 window popping up

It is annoying and indicates a problem.

Follow these steps to correct this “problem”:

1. Click on **START / RUN**
2. Type "**msconfig**" (leave the quotes out) and click **OK**
3. Click on the **STARTUP** tab when the MSCONFIG windows comes up...
4. **Uncheck all items.** (You will be able to reverse this process if you want to. Don't worry about it)

NOW IT IS TIME TO START TROUBLESHOOTING. You can go through the process, one at a time, and restarting after each checkmark, but, that will take a very long time.

LET'S DO THIS IN GROUPS AND THEN RESTART AFTER EACH GROUP IS CHECK-MARKED.

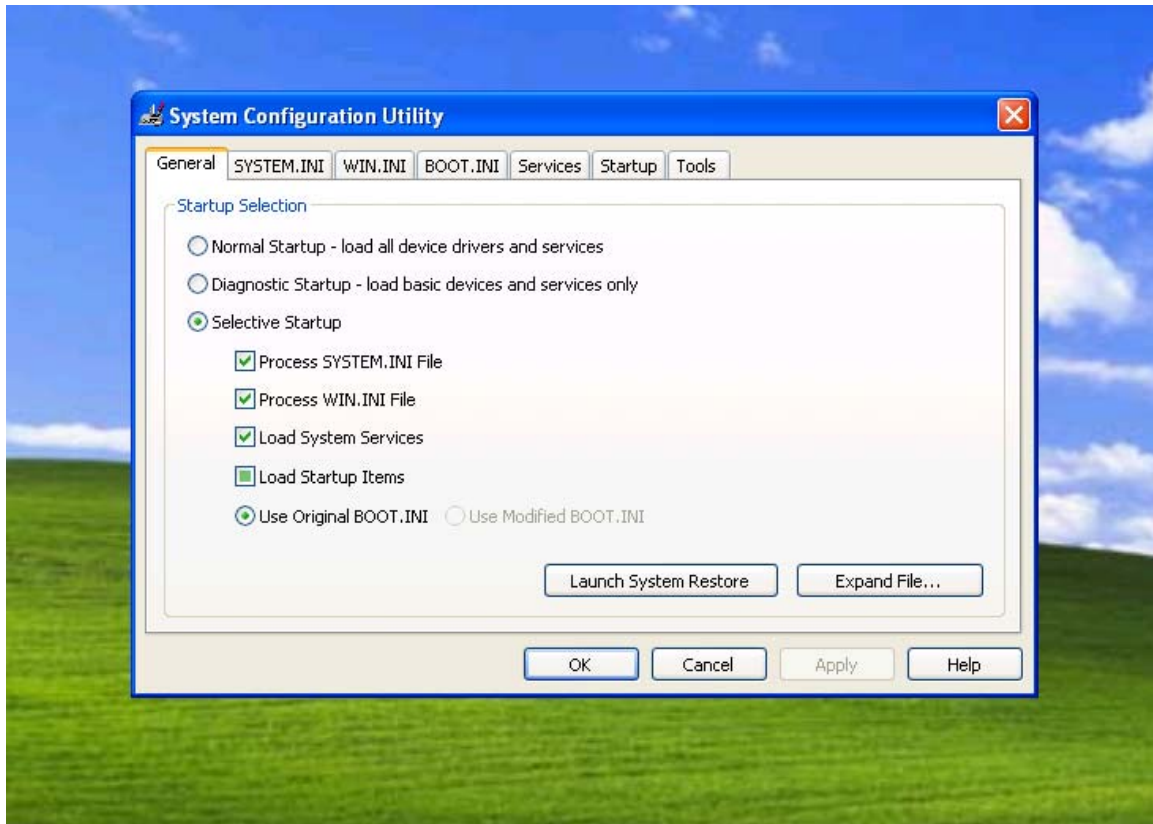
5. **Select the top half of the group of items** (by placing a check mark in each box next to the items). Select **APPLY**, and then **RESTART** to see if problem shows up.

6. When it restarts

- a text box will come up stating what you are doing and instructs you to check mark if you don't want to see the window anymore.



- Don't check it yet. Just select OK. Now wait until the MSCONFIG “Selective Startup” window opens,



- and most importantly, the computer completes its bootup.

7. If the problem does not show up (system32...), you know the problem lies in the bottom group.

- Go back in now, and select the top half of the bottom group...
- Keep following this same procedure until you narrow the problem down to one item.

If the problem showed up, deselect the top half (group), and select the bottom half (group) of items instead

- What you are doing is narrowing down the possibilities quickly, without going through the process one at a time and restarting. That would take a lot longer.

8. Restart again, the problem should not show up. (If it does show up, you have not followed the instructions, SORRY.)

- leave those bottom items checked and go through the same process with the top Group of items...
- You know, top half, bottom half, etc.

- Keep following this same procedure until you narrow the problem down to one item.

9. **Now you have narrowed it down to one item** and want to complete this process.

10. Restart. When it restarts a text box will come up stating what you are doing and instructs you to check mark if you don't want to see the window anymore.



- Now is the time to place a checkmark in that box.
- Then select OK. The MSCONFIG window should not open now. Restart for the final time.

11. **When the machine reboots, the problem will be gone, and you can start working again.**

Let me know if you have a problem with this...
brianhstoddard@gmail.com
541-609-0400

Brian